



**Summer Sale
Huge Discounts
Save \$100!
Early Deadline Extended
Until 8/1**



*Setting Excellence
in Nursing Practice*

September 7-10, 2011

**Marriott Wardman Park
Washington, DC**

**14th National Mother Baby
Nurses Conference**



Provided by
ACADEMY of MOTHER BABY
NEONATAL NURSING and MB
EDUCATION



Save \$100
*Newly
Reduced
Prices*

14TH NATIONAL MOTHER BABY NURSES CONFERENCE

Washington, DC • September 7–10, 2011

You spoke and we listened! Considering the rave reviews for this venue from our 2008 conference attendees, we are taking this conference back to DC! We invite you to attend the 14th National Mother Baby Nurses Conference at the Marriott Wardman Park hotel. With a blend of charm, modern elegance, and a historic landmark setting, this Washington, DC, hotel's stunning guest rooms, meeting rooms, and impeccable service make it the perfect choice for this conference. Situated on 16 garden acres, this hotel has hosted a long list of U.S. Presidents, dignitaries, and VIPs. You will find this hotel an excellent place from which to explore the city and enjoy the sights.

Conveniently located in the busy and diverse Adams-Morgan neighborhood, there are dozens of great, local, one-of-a-kind restaurants to choose from, within walking distance. There is a Metro stop right at the hotel to take you to all of the "can't miss" sights

of Washington, DC. You will delight in the hotel's close proximity to the National Zoo and the National Cathedral.

Don't miss the Monuments by Moonlight tour on Thursday night. Experience the beauty and awe of our country's most stirring monuments in a whole new way...by moonlight. On the Monuments by Moonlight Tour you'll be transported to many of the city's most famous sights, while enjoying the tranquil night and evening breeze. We'll **pick you up right at the conference hotel** and you can join your colleagues and friends for a fun, memorable evening out. See page 8 for sign up details. *Special event fee required.*

Enjoy our expert faculty, network with your colleagues, keep your clinical skills fresh, and be sure you are up-to-date on the most current research-based best practices in mother baby nursing while you enjoy the excitement of DC! See you there!

Purpose of this Conference

The purpose of this conference is to provide current and clinically applicable information for prenatal, intrapartum, and postpartum care of the mother as well as infant care, both in the hospital and through transition to home. The educational sessions provide information to nurses and other health care professionals who care for the expectant and postpartum mother and her newborn. Specific objectives for each presentation will be listed in the conference program.

Conference Program

Registration Open 4:00–7:00 PM Tuesday, September 6

Preconference Day

Wednesday, September 7

7:30 AM–5:00 PM Registration Open

8:00–8:30 AM Networking Opportunity (Coffee, Tea, Pastries)

8:30 AM–5:00 PM Full Day Programs (6.5 contact hours)

010 Drug Therapy in the Neonate: Current Controversies

Sherry Leudtke, PharmD

Many of the drug therapy practices in neonatology, which have been standard of care for years, are being questioned. As science reveals more about the development of the premature infant, we are beginning to understand the impact that some drugs have on long-term outcomes. In this session, Dr. Leudtke highlights drug therapy challenges and controversies faced in the NICU and describes emerging drug treatment options that hold promise for the future.

020 Practical Sim: NRP Instructor Workshop

Jeanette Zaichkin, RN, MN, NNP-BC

Join your fellow NRP hospital-based instructors and regional trainers for hands-on learning about the revised NRP provider course curriculum. Create and conduct newborn resuscitation scenarios using simple mannequins and low-tech methods suited to the community hospital setting. Practice debriefing and discover tools to build your skills. Take home information that enables you to conduct an instructor update for the NRP instructors at your hospital or in your region.

Rx = 6.5

8:30 AM–12:30 PM Half Day Morning Program (3.75 contact hours)

030 Turning the Good, the Bad, and the Ugly into Sizzling Success: Leading the Way!

Sherry Lee Simons, MSN, CCRN, RNC-NIC

In an ever changing health care environment, nurse leaders must be ready to demonstrate leadership, ensure patient safety, guide change, and produce results quickly. Ever feel like you need answers and need them now? If so, this fun-filled workshop strengthens your capacity to lead, drive positive change, influence outcomes, and leave you excited to run back and put it all to practical use. Don't miss this opportunity to sizzle with success!

1:00–5:00 PM Half Day Afternoon Program (3.75 contact hours)

040 Who's Driving Feeding Practice? An Introduction to Infant-Driven Feeding

Sandra Carroll, OTR, CIMI

Sue Ludwig, OTR

Who drives feeding, the caregiver or the infant? Our speakers introduce the specific changes that must take place when moving from traditional feeding practices to an infant-driven feeding model. The importance of early sensory development on later feeding success is discussed. One unit's successful tips for implementation of an infant-driven feeding practice are highlighted. A hands-on learning lab will add to the impact of this interactive presentation.

14TH NATIONAL MOTHER BABY NURSES CONFERENCE

Washington, DC • September 7–10, 2011

Main Conference

Thursday, September 8

- 6:30 AM–6:00 PM** Registration Open
6:45–7:30 AM Networking Opportunity (Coffee, Tea, Pastries)
7:30–7:45 AM Welcome/General Announcements

General Sessions

7:45–8:45 AM

GS 141 Giving Telephone Advice: Practice and Legal Considerations

*Patricia C. McMullen, PhD, JD, CRNP
Vicki E. Long, DNP, CNM*

Dr. McMullen and Dr. Long discuss practical issues in establishing, maintaining, and evaluating a telephone triage system. Legal issues are emphasized.

8:45–10:00 AM Refreshment Break—Please visit Exhibits and Posters (Coffee, Tea)

10:00–11:00 AM

GS 142 Depression and SSRI Use in Pregnancy: What are the Risks? **Rx = 1**

Sherry Leudtke, PharmD

Depression in a pregnant woman is not uncommon, affecting up to 10 percent of all pregnancies. Approximately 3.7 percent of these are managed with an SSRI. The risks associated with SSRI use in pregnancy will be put in perspective relative to the risks that accompany untreated depression. Clinical presentation of an infant born to a mother treated with as SSRI during pregnancy is discussed.

11:00 AM–12:00 PM

GS 143 When High Risk OB Becomes Critical Care: What is Your Plan?

Nan Troiano, RN, MSN

Everyone who provides care to pregnant women can encounter situations whereby complications or emergencies may arise. Pregnant women with a serious complication or critical illness have unique clinical needs. It is important to have a plan for how care will be provided to this patient population. Ms. Troiano discusses strategies to meet these needs and utilizes clinical case examples to illustrate concepts.

12:00–1:15 PM Lunch provided by the Academy of Neonatal Nursing—Exhibits Open

1:15–2:15 PM A Workshops (Concurrent Sessions)

151 Case Studies in High Risk Obstetrics: The Nurse's Response to OB Emergencies

Katherine M. Cvach, RNC, MS

Ms. Cvach reviews the physiology and pathophysiology associated with three obstetrics cases: hypertensive crisis/eclampsia, anaphylactoid response in pregnancy, and AV malformation in pregnancy. Because the incidence of these disorders is rare, response in an emergency situation can be stressful. Discussion of nursing actions and expected patient outcomes will help the nurse who participates in this workshop develop a sense of confidence when dealing with obstetric emergencies.

152 From Fetal Infant Mortality Review (FIMR) to Human Simulation: What's the Connection?

Cheryl Nunnally Bodamer, PhD, MPH, RN

FIMR findings often identify gaps in knowledge related to emergency care of the sick neonate. Dr. Bodamer discusses how recommendations for simulation-based training can address those gaps.

153 Neonatal Transition: Myths and Challenges to Adaptation, Part I

Karen Starr, MS, BC-NNP

Our speaker goes "behind" the routine of newborn transition to discuss what is required and when and why. Ms. Starr explains the physiologic adaptations necessary during a successful transition to extrauterine life, and why it isn't always so easy.

154 Postpartum Depression: Practical Strategies for Identifying and Managing Your Prenatal Patients **Rx = .2**

Vicki E. Long, DNP, CNM

Dr. Long focuses on tools and protocols for identifying the patient with postpartum depression. She also discusses management protocols, including psychopharmaceuticals used in this population.

2:30–3:30 PM B Workshops (Concurrent Sessions)

161 Hemorrhage and DIC

Nan Troiano, RN, MSN

Obstetric hemorrhage and DIC remain serious complications during pregnancy and are responsible for a significant number of maternal deaths annually. Our speaker addresses pathophysiology, assessment parameters, treatment options, and component therapy. Clinical case examples are presented to illustrate concepts.

162 Ignite Learning with Innovative Teaching Strategies

Jobeth Pilcher, EdD, RNC-NIC

What do you do to jazz up educational activities? How do you engage staff during orientation or continuing education programs? How about annual competencies? This fun-filled presentation provides preceptors and nurse educators with a variety of strategies for creating memorable and authentic learning.

163 Neonatal Transition: Myths and Challenges to Adaptation, Part II

Karen Starr, MS, BC-NNP

This workshop is a continued discussion of session #153 (see above).

164 Being Family: The Perinatal Hospice Concept

Mary Peroutka, BSN, RNC-OB, C-EFM

Technology has allowed us to peek inside the womb and find fetuses that have special needs and even those whose conditions are life-limiting. Families will frequently choose to carry these babies to term or a natural ending of the pregnancy. These babies and families have very special needs and perinatal hospice has developed to help them find a path to birth and through life to death. Join Ms. Peroutka as she discusses ways to make this difficult birth a special neonatal event.

3:30–4:15 PM Refreshment Break—Please visit Exhibits and Posters (Iced Tea, Lemonade)

4:15–5:15 PM C Workshops (Concurrent Sessions)

171 Diabetes in Pregnancy **Rx = .25**

Mary Ellen Burke Sosa, RNC-OB, MS

Diabetes has become a national epidemic, and this includes diabetes in pregnancy. In this session, Ms. Sosa takes participants from Type 1 diabetes through Type 2 and includes gestational diabetes and the most up-to-date treatments for all types of diabetes.

172 Policies, Procedures, and Protocols

Nan Troiano, RN, MSN

Policies, procedures, and protocols are an integral part of the clinical care arena. In addition, these documents are increasingly an integral part of the medical legal process. Our speaker discusses the purposes of these documents and identifies strategies to strengthen the clinical component and avoid medical legal pitfalls.

173 Oral Feeding and the Late Preterm Infant

Sandra Carroll, OTR, CIMI and Sue Ludwig, OTR

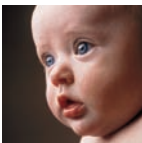
Near-term or late preterm infants constitute a unique clinical population garnering increased attention and research as differences from their term counterparts are appreciated. Historically, late preterm infants are treated much like term infants in regards to oral feeding, setting up much frustration for the family, as well as the staff caring for the mother/baby couplet. Our speakers discuss maturational and developmental factors that influence feeding success. Feeding practices that may facilitate the transition to successful oral feeding are also discussed.

174 From Fetal Infant Mortality Review (FIMR) to Human Simulation: What's the Connection? (repeat)

Cheryl Nunnally Bodamer, PhD, MPH, RN

See # 152

7:00–10:00 PM Monuments by Moonlight Tour (Special Event Fee Required—See page 8.)



14TH NATIONAL MOTHER BABY NURSES CONFERENCE

Washington, DC • September 7–10, 2011

Friday, September 9

- 6:30 AM–4:15 PM** Registration Open
6:00 AM "Walk through the Zoo"—Join us for a brisk early morning walk to and through the National Zoo
6:45–7:30 AM Networking Opportunity—(Coffee, Tea, Pastries)
7:30–7:45 AM Announcements

General Sessions

- 7:45–8:45 AM**
GS 241 Delivery Controversies Rx = .2
Mary Ellen Burke Sosa, RNC-OB, MS

The Joint Commission has made safety of the patient and fetus a national priority. Everything we do, from inducing labor, to the use of oxytocin as a high-alert medication, needs to be reexamined. Our speaker includes discussion of the use of oxytocin, protocols for tachysystole (forget the term hyperstimulation), and laboring down.

- 8:45–10:15 AM** Refreshment Break—Last Chance to visit Exhibits and Posters (Coffee, Tea)

- 10:15–11:15 AM**
GS 242 Perinatal Mood and Anxiety Disorders
Emily E. Drake, PhD, RN

Discover how you can help women who are suffering in silence from this condition. It's not just the baby blues. Recognize the many faces of perinatal mood and anxiety disorders, the signs and symptoms and risk factors of each. Receive clinically tested screening tools and strategies to help you intervene. Discuss up-to-date treatment options and how to take a family approach to treating these disorders. Dr. Drake shares information about local and national resources.

- 11:15 AM–12:15 PM**
GS 243 Saving Face on Facebook: Social Networking Pitfalls for Nurses
Rebecca Cady, Esq., BSN, CPHRM

Ms. Cady discusses laws and regulations that impact nurses' use of social networking. She explores actual social networking "don'ts" seen on the Internet, and discusses the potential legal consequences for the nurse. Participants learn steps that can be taken to avoid legal trouble in the use of social networking.

- 12:15–1:30 PM** Lunch available for purchase

1:30–2:30 PM D Workshops (Concurrent Sessions)

- 251 Congenital Infection: Diagnosis, Treatment, and Prognosis**

Roberta L. DeBiasi, MD, FAAP

Our speaker outlines the various viral and microbial threats to the developing fetus. Clinical, laboratory, and ultrasound prenatal diagnostic techniques are employed to identify each agent. The latest in medical treatments available are presented.

- 252 Exclusive Breastfeeding: Human Milk for Human Babies—How to Promote and Support Breastfeeding for a Healthier Society**

Susan Weyer, RN, IBCLC, ICCE, ICD

Everyone agrees that breastfeeding is best, so why are breastfeeding initiation rates and duration rates not higher? As health care professionals, it is our ethical responsibility to practice BEST evidence-based medicine including exclusive breastfeeding. Come learn the "hand's-on" "how-to's" of breastfeeding.

- 253 Care of the Late Preterm Infant**

Debbie Fraser, MN, RNC-NIC

The challenge of the late preterm infant has perplexed care providers for the past several years. Since 2004, when the first study was published showing the increased morbidities associated with late preterm birth, we have struggled to develop an evidence-based approach to managing this population. Ms. Fraser discusses current issues and approaches to caring for the late preterm infant.

- 254 What's New for 2012 in S.T.A.B.L.E.?**

Kris A. Karlsen, PhD, NNP-BC

Since 2001, more than 206,000 providers have completed a S.T.A.B.L.E. Learner Course. This popular neonatal post-resuscitation course is updated every 5 to 6 years and everyone wants to know what's on the horizon for the 2012 S.T.A.B.L.E. update! Here's your chance to hear from the program author about new additions, changes, and enhancements to the program materials, tests, and slides. How to incorporate simulation into your S.T.A.B.L.E. courses, and renewal by simulation will also be discussed.

2:45–3:45 PM E Workshops (Concurrent Sessions)

- 261 Partnerships Between Families, Universities, and Practices: Helping Rural Communities Create Their Own Midwives**

Juliana van Olphen Fehr, CNM, PhD, FACNM

Our speaker describes how families, educators, and health care providers worked together to create the "Midwifery Initiative" and the "Circle of Caring," a partnership between education and practice to increase access to nurse-midwifery education and care in rural areas. Because families were actively engaged through the inception and development of this model, it is community-responsive and can decrease health disparities. Learn how this model could work in your community or referral hospitals.

- 262 Postpartum Emergencies**

Mary Ellen Burke Sosa, RNC-OB, MS

The patient has had a successful delivery. But now all heck is breaking loose—from hemorrhage to pulmonary embolus—what to look for to prevent maternal morbidity and mortality.

- 263 Metabolic Screening**

Emily E. Drake, PhD, RN

Expanded newborn screening has saved lives and sparked controversy. Nurses are on the front line, collecting over 400 million blood spots for newborn screening every year. Learn more about the expanded screening tests that are run on these blood samples, what they mean, and what happens next. Explore the legal and ethical issues involved. Discover new resources for families and clinicians.

- 264 Management of Addiction Disorders in Pregnancy** Rx = .5

Sherri Lee Simons, MSN, CCRN, RNC-NIC

A comprehensive presentation covering issues ranging from the neurobiology of addiction, to risk factor screening, to treatment. The adverse effects of illicit drug use on the developing fetus are discussed. Peripartum pain management is also discussed.

Saturday, September 10

- 7:00 AM–12:30 PM** Registration Open
7:15 AM–8:00 AM Networking Opportunity (Coffee, Tea, Pastries)

General Sessions

- 8:00–8:15 AM** Raffle, Announcements

- 8:15–9:15 AM**

- GS 341 Caring for the Caregiver**

Sheila Donahue, BSN, MS, RNC-NIC

Do you feel like a top spinning continuously? Does juggling your job, family, and life remind you of the old game show "Beat the Clock"? In "Caring for the Caregiver" we discuss making the choice between a balancing act and a balanced life. We identify strategies for taking care of yourself and in the process learn to love the life you are living!

- 9:15–9:30 AM** Refreshment Break (Coffee, Tea)

14TH NATIONAL MOTHER BABY NURSES CONFERENCE

Washington, DC • September 7–10, 2011

9:30–10:30 AM

GS 342 One Nurse, Two Nurse, Three Nurse, Four...All I Know is I Need More!

Sherri Lee Simons, MSN, CCRN, RNC-NIC

In this dynamic general session our speaker discusses the latest staffing guidelines that serve as a foundation for safe and effective perinatal nursing care. Evidence-based staffing practices and realistic implementation strategies will be provided to serve as a road map for how to make a business case for implementing safe staffing in any environment. You won't want to miss the discussion on this critical issue!



10:30–11:30 AM

GS 343 The Role of Nursing in Implementing a Life Course Perspective to Improve Maternal Child Health Practice

Mario Drummonds, MS, LCSW, MBA

This presentation is a high-level, A to Z tour that shows us how Mr. Drummonds was able to achieve his organization's goals in Harlem. He walks us through many of the steps that resulted in sustainable programs that lift the community and can last for decades. He describes how his agency, the Northern Manhattan Perinatal Partnership, Inc., has dramatically reduced the infant mortality and low birth weight rates in Central Harlem from 27.7 deaths per 1,000 live births in 1990, to 6.1 deaths in 2008 and how his agency worked collaboratively with nurses and midwives at Harlem Hospital to build a new birthing center on the labor and delivery floor in 2003 and win Baby Friendly status for the hospital in 2008. Finally, he establishes nursing's role in transforming social determinants of health by implementing life course theory. He is full of passion, enthusiasm, and energy.

11:30 AM–12:00 PM Conclusion and Evaluations

Topics and speakers are subject to change

Faculty

Cheryl Nunnally Bodamer, PhD, MPH, RN

Simulation Educator
Center for Human Simulation and Patient Safety
Virginia Commonwealth University
Richmond, Virginia

Rebecca Cady, Esq., BSN, CPHRM

Director of Risk Management, Deputy Risk Counsel
Children's National Medical Center
Washington, DC

Sandra Carroll, OTR, CIMI

President and Cofounder, Neonatal Therapy Solutions
Supervisor, PM&R Women's and Children's Team
Baylor University Medical Center
Dallas, Texas

Katherine M. Cvach, RNC, MS

Clinical Nurse Specialist, Maternal Child Health
Mercy Medical Center
Baltimore, Maryland

Roberta L. DeBiasi, MD, FAAP

Associate Professor of Pediatrics
George Washington University School of Medicine
Division of Pediatric Infectious Diseases
Children's National Medical Center/Children's
Research Institute
Washington, DC

Sheila Donahue, BSN, MS, RNC-NIC

Director, Obstetric, Neonatal, and Pediatric Services
Howard County General Hospital
Baltimore, Maryland

Emily E. Drake, PhD, RN

Associate Professor
University of Virginia School of Nursing
Charlottesville, Virginia

Mario Drummonds, MS, LCSW, MBA

CEO, Northern Manhattan Perinatal Partnership, Inc.
Principle Investigator, Central Harlem Healthy Start
New York, New York

Juliana van Olphen Fehr, CNM, PhD, FACNM

Coordinator, Nurse-Midwifery
Shenandoah University
Winchester, Virginia

Debbie Fraser, MN, RNC-NIC

Associate Professor
Athabasca University
Neonatal Nurse Practitioner
St. Boniface General Hospital
Editor-in-Chief, *Neonatal Network*[®]
Executive Director, Academy of Neonatal Nursing[™]
Winnipeg, Manitoba, Canada

Kris A. Karlson, PhD, NNP-BC

Author/Founder
The S.T.A.B.L.E. Program
Park City, Utah

Vicki E. Long, DNP, CNM

Certified Nurse Midwife, Clinical Coordinator
Annapolis OB-GYN Associates, P.A.
Annapolis, Maryland

Sue Ludwig, OTR

President and Founder, National Association of Neonatal
Therapists
Senior Occupational Therapist
UC Health University Hospital
Cincinnati, Ohio

Sherry Luedtke, PharmD

Associate Professor of Pharmacy Practice
Texas Tech University School of Pharmacy
Amarillo, Texas

Patricia C. McMullen, PhD, JD, CRNP

Dean, School of Nursing
The Catholic University of America
Washington, DC

Mary Peroutka, BSN, RNC-OB, C-EFM

Clinical Nurse III
Howard County General Hospital
Columbia, Maryland

Jobeth Pilcher, EDD, RNC-NIC

NICU Nurse Educator
Baylor University Medical Center
Dallas, Texas

Sherri Lee Simons, MSN, CCRN, RNC-NIC

Chief Nursing Officer
Healthcare Team Training
Simons and Company
Stafford, Virginia

Mary Ellen Burke Sosa, RNC-OB, MS

President, Perinatal Resources
Staff Nurse, LDR
Kent Hospital
Diabetes Nurse Clinician
Women and Infant's Hospital
Providence, Rhode Island

Karen Starr, MS, BC-NNP

Neonatal Nurse Practitioner
Greater Baltimore Medical Center
Baltimore, Maryland

Nan Troiano, RN, MSN

Director, Women's and Infants' Services
Sibley Memorial Hospital
Johns Hopkins Medicine
Washington, DC

Susan Weyer, RN, IBCLC, ICCE, ICD

Lactation Specialist
Childbirth and Breastfeeding Instructor/Doula
Howard County General Hospital and Private Practice
Columbia, Maryland

Jeanette Zaichkin, RN, MN, NNP-BC

Coordinator, Neonatal Outreach Program
Seattle Children's Hospital
Seattle, Washington

Conference Chairpersons

Debbie Fraser, MN, RNC-NIC

Associate Professor
Athabasca University
Neonatal Nurse Practitioner
St. Boniface General Hospital
Editor-in-Chief, *Neonatal Network*[®]
Executive Director, Academy of Neonatal Nursing[™]
Winnipeg, Manitoba, Canada

Sheila Donahue, BSN, MS, RNC-NIC

Director, Obstetric, Neonatal, and Pediatric Services
Howard County General Hospital
Baltimore, Maryland

Mary Ann Lucia, RNC, BSN

Nurse Manager of Obstetrics
Martha Jefferson Hospital
Charlottesville, Virginia

Sherri Lee Simons, MSN, CCRN, RNC-NIC

Chief Nursing Officer
Healthcare Team Training
Simons and Company
Stafford, Virginia

Conference Information

Continuing Education Information

The main conference provides 14.5 contact hours (based on a 60-minute contact hour). *Additional contact hours are available for preconference workshops and poster presentations.*

The provider, the Academy of Neonatal Nursing, is approved by the California Board of Registered Nursing, Provider #CEP 6261.

Iowa Board of Nursing, Provider #189; and Florida Provider #FBN 3218, content code 1300.

The Academy of Neonatal Nursing is accredited as a provider of continuing nursing education by the American Nurses Credentialing Center's Committee on Accreditation.

Cancellation, Transfer, and Refund Policy

- All cancellations and transfers must be received in writing. For cancellations received prior to August 17, 2011, we will refund registration costs, less a \$50 administrative fee. We are unable to grant refunds after August 17, 2011, but will gladly transfer your registration to a colleague if the request is made in writing to Anthony J. Jannetti, Inc., National Mother Baby Nurses Conference, East Holly Avenue, Box 56, Pitman, NJ 08071-0056, or email your request to Charlene Fuhrer at fuhrerc@ajj.com.
- Refunds will be processed within 2 weeks after the conference.
- If it becomes necessary to cancel the 14th National Mother Baby Nurses Conference for any reason, including labor strikes or natural disasters, liability shall be limited to a full refund of registration fees.
- Notification of a cancelled conference will be mailed at least 15 days prior to the first day of the conference, if possible.

Hotel Information

MARRIOTT WARDMAN PARK

Even among the most sophisticated hotels in Washington, DC, Marriott Wardman Park rises above. With a blend of charm, modern elegance, and a historic landmark setting, this Washington, DC, hotel's stunning guest rooms and impeccable service make it the perfect choice. You will find it the perfect place from which to network and learn, as well as explore the city and enjoy your down time.

The Marriott Wardman Park has been designated as the headquarters hotel for the 14th National Mother Baby Nurses Conference. A block of rooms has been secured for attendees at the special rate of \$169 single/double. Rates are subject to applicable state and local taxes (currently 14.5%). This special rate is available until Friday, August 12, 2011. Reservations received after this date will be accepted on a space and rate available basis. To make your reservations, call 800-228-9290 and refer to the National Mother Baby Nurses Conference or make your reservations online at www.academyonline.org.

Dining and Entertainment

Your dining pleasures will be fulfilled without even leaving the hotel: Stone's Throw Restaurant is Washington DC's next great steakhouse, featuring steaks, chops, and seafood dishes. The Lobby Bar affords an intimate, comfortable atmosphere that's perfect for catching up with friends. If you're in the mood for something on the lighter side, stop in to Harry's Pub for a snack, sandwich, or a cocktail. If you're on the run, grab a quick bite at Woodley Market or Illy's Coffeeshouse. There are also a number of restaurants within a block of the hotel.

You won't have to look far for things to do in Washington, DC: The Metro is just outside the hotel's door. The city is filled with national monuments and museums like the Washington Monument, Lincoln Memorial, and Smithsonian. Remember to bring your camera as these sights are truly unbelievable! If you are interested in the arts, Washington, DC, is home to both the Corcoran Museum of Art and the Kennedy Center for the Performing Arts. You are just a cab ride away from Old Town Alexandria (a quaint little shopping village), Georgetown Shopping Mall, and of course, within walking distance of the National Zoo.

Airlines

American Airlines has been contracted as the official airlines for the conference. To obtain the discounted rates through Ameri-

can Airlines call American's Meeting Services Desk at 800-433-1790 and refer to STARfile number 3491A1.

Airport Information

The Marriott Wardman Park Hotel is conveniently located within easy access of three airports with all major airlines flying to them. Reagan National Airport (DCA) is the closest, only 9 miles away, Washington Dulles International Airport (IAD) is 25 miles away, and the Baltimore/Washington International Airport (BWI) is 33 miles away. The hotel does not provide shuttle service; however, Super Shuttle, Metro service, and taxi cabs are available. If using the Metro, the Woodley Park-Zoo/Adams-Morgan stop (Red Line) is directly in front of the hotel.

From DCA:

Metro to hotel: \$1.45 one way

Taxi: \$18.00 one way

Super Shuttle: \$14.00

From IAD:

Taxi: \$55.00 one way

Super Shuttle: \$29.00

From BWI:

Amtrak to Union Station: \$12-\$18 one way, *Metro from Union*

Station to hotel: \$1.85 one way

Taxi: \$60.00 one way

Super Shuttle: \$37.00

All pricing is current at the time of printing and is subject to change.

Car Rental

Avis has been chosen as the official car rental agency for the National Mother Baby Nurses Conference. Rates will be in effect from August 31 to September 17, 2011, and include unlimited free mileage. For details, call reservations at Avis directly at 1-800-331-1600 or make online reservations at academyonline.org. To receive the discount rates please refer to the Avis Worldwide Discount (AWD) number **J907463**.

Parking

The hotel offers valet parking for \$37 per day with in and out access. Self parking is \$32 per day. All pricing is current at the time of printing and is subject to change.

Weather Conditions

The weather in the nation's capital in September should be fairly warm. Expect daily highs around 80-85°F and lows around 65°F.

Group Discount

Send four (4) for the price of three (3). Any facility/unit registering four (4) nurses together, will only pay for three (3). Discount of 25% will be applied to each of the four (4) registrants who sign up together for the full, main conference. All registrations must be submitted together, no exceptions. **Please note:** *If a member of the group cancels, the group is no longer eligible for this discount, and the discount is forfeited. Cannot be combined with any other offer.*

Session Handouts

In an effort to keep your registration fees down, session handouts will not be printed in the program guide. **Handouts will be available for free download** beginning approximately two weeks prior to the conference for registered conference participants. After the conference, handouts, audio recordings, and PowerPoint® presentations will be available for most sessions and you will have access for one year postconference.

The login instructions for accessing the handouts will be e-mailed to you when handouts become available. You are strongly encouraged to bring with you **only the handouts for the sessions you plan on attending**, or download them to your computer for review after the conference. There will be room for note-taking in the program guide.

Power strips, printers, and paper copies of handouts will not be available on site.

14TH NATIONAL MOTHER BABY NURSES CONFERENCE

Washington, DC • September 7–10, 2011

Register online at academyonline.org

Please Print Clearly. Confirmation will be sent *via email only*.

Name _____ Phone _____
 Home
 Work
 Cell

Credentials _____ E-mail _____

Home Address _____ Nursing License # _____ (required for continuing education)

City _____ State _____ Zip _____ Employer/Hospital _____

We use your email address to deliver your receipt and conference information.

We occasionally provide e-mail addresses of attendees to carefully screened vendors to share information on nursing-related products and services.

Check here if you prefer not to have your e-mail address provided to vendors.

Conference Fees

September 7, 2011, Preconference Workshops (See page 2 for workshop descriptions.)

Full Day Preconference Workshops

8:30 AM–5:00 PM

- 010 Drug Therapy Controversies
in the Neonate \$175
- 020 NRP Instructor Workshop \$175

Morning Preconference Workshop

8:30 AM–12:30 PM

- 030 Turning the Good, the Bad,
and the Ugly into Sizzling
Success: Leading the Way! \$100

Afternoon Preconference Workshop

1:00–5:00 PM

- 040 Who's Driving Feeding Practices?
An Introduction to Infant-Driven
Feeding \$100

September 8–10, 2011, Main Conference Registration

SAVE \$100! NEWLY REDUCED PRICES

Registration Dates

- Early Bird through 8/1/11 ~~\$395~~ **\$295**
- Regular 8/2/11–9/1/11 ~~\$415~~ **\$315**

Registration Dates

- On-Site (after 9/1/11) \$465
- Thursday or Friday (circle one) \$185
- Saturday only \$100

Group Discount: See page 6 for details. Reduced prices do not apply to Group Discount.

Student and Retiree Discounts: \$210. Student must provide proof of full-time student status, nursing program only. Retirees must be at least 65 years of age.

Workshops

Indicate the workshop sessions you wish to attend by filling in the number of the workshop next to each session listed here. See academyonline.org for complete workshop descriptions.

Thursday Sessions A # 1 ___ B # 1 ___ C # 1 ___

Friday Sessions D # 2 ___ E # 2 ___

Conference Registration Fees

1. Preconference Workshop # 0 ___ \$ _____
2. Preconference Workshop # 0 ___ \$ _____
3. Main Conference Registration Fee \$ _____
4. Monuments by Moonlight Tour ___ @ \$49 \$ _____
See p. 8 for details
- Total Amount Due** \$ _____

Please let us know who you are

1. I work in:
 L & D Postpartum Nursery Combined Care
2. My primary role is:
 Staff Nurse Manager Educator CNS
3. Number of deliveries per year in my facility:
 <200 200–500 501–1,000 >1,000

Payment

- Check enclosed payable in U.S. funds to: **MBC**
- VISA MasterCard
- Card # _____ - _____ - _____ - _____
- Exp. date _____ CVV-code _____
(3-digit code located in the signature strip on back)
- Signature _____
- Billing address same as above. If different:
 Address _____
 City/State/Zip _____

Register online at academyonline.org or

return this form to:

MB Conference Registration,

Anthony J. Jannetti, Inc.,

East Holly Ave., Box 56, Pitman, NJ 08071

Telephone inquiries: 856-256-2352 Fax: 856-218-0557

Registration will not be processed without payment.

See page 6 for cancellation policy.



Mother Baby Education
1425 N. McDowell Blvd., Suite 105
Petaluma, CA 94954-6513

14th National Mother Baby Nurses Conference—Register Early for Best Price!

SPECIAL EVENING EVENT!!

Special Event Fee Required

Thursday, September 8

Monuments by Moonlight Tour

It's first class treatment as you are picked up at the Marriott in a luxury motor coach for a moonlit tour of the capital city including "must-see" monuments. Throughout your drive, an expert tour guide will enlighten you with a wealth of information about our nation's capital. The first stop on your tour will be Lafayette Square with a superb view of the White House and continue through the National Mall, along the Potomac, and up to Capitol Hill. Included are stops at the Lincoln Memorial, Korean and Vietnam War Memorials, and the Jefferson Memorial. Tour stops may vary based on weather and traffic patterns. Don't miss this informative and scenic event in DC.

TIME: 7:00–10:00 PM

PRICE \$49



Jake McGuire

Preregistration is required. Space is limited, you must sign up before **August 17, 2011**. Sign up as part of your online registration at academyonline.org or complete the form on page 7. Tour questions? Call 703-584-2460.

Conference Hotel

Marriott Wardman Park

2660 Woodley Road NW, Washington, DC 20008

Reservations: 800-228-9290 Fax 202-234-0015

Single/Double: \$169.00 + 14.5% tax (taxes subject to change)

\$20.00 for each additional person sharing room

This hotel is a non-smoking facility.

The first night's room rate is required as an advance deposit for all reservations.

Advanced reservation deposits are completely refundable if cancelled at least 7 days prior to arrival date.

Check-in time is 4:00 PM. Check-out time is 12:00 noon.

Reservations must be received no later than Friday, August 12, 2011. Reservations made after this date will be on a space and rate available basis.

Make your hotel reservations online at academyonline.org.

